

# Nambucca Valley Family Day Care

## SNAKE AWARENESS POLICY

Nambucca Valley Family Day Care (NVFDC) may have educators operating an Education and Care service located in bush settings or visit bush settings as part of their educational program where it is known snakes may be active and present. Snakes are most prevalent during spring or summer but could be encountered at any time of the year - especially on sunny days.

Unprovoked, snakes rarely attack humans and are generally shy, timid animals that will avoid conflict if given the opportunity. Snakes are protected under the Nature Conservation Act 1992, and it is an offence to kill or injure them. The greatest risk of snake bite from venomous snakes is from people trying to kill or handle them.

NVFDC is committed to ensuring our educators provide a safe and healthy environment for children whilst being respectful of wildlife in and around our environment. We aim to minimise the potential risk of injury from a snake bite by educating children and NVFDC educators about the risks associated with snakes.

### NATIONAL QUALITY STANDARD (NQS)

QUALITY AREA 2: CHILDREN'S HEALTH AND SAFETY		
2.2	Safety	Each child is protected.
2.2.1	Supervision	At all times, reasonable precautions and adequate supervision ensure children are protected from harm and hazard.
2.2.2	Incident and emergency	Plans to effectively manage incidents and emergencies are developed in consultation with relevant authorities, practiced and implemented.

QUALITY AREA 3: PHYSICAL ENVIRONMENT		
3.2.3	Environmentally responsible	The service cares for the environment and supports children to become environmentally responsible

QUALITY AREA 7: GOVERNANCE AND LEADERSHIP		
7.1.2	Management Systems	Systems are in place to manage risk and enable the effective management and operation of a quality service.

EDUCATION AND CARE SERVICES NATIONAL REGULATIONS	
12	Meaning of serious incident
85	Incident, injury, trauma and illness policies and procedures
86	Notification to parents of incident, injury, trauma and illness
87	Incident, injury, trauma and illness record
89	First Aid Kits
97	Emergency and evacuation procedures
98	Telephone or other communication equipment
100	Risk assessment must be conducted before excursion
168	Education and care services must have policies and procedures
170	Policies and procedures to be followed
171	Policies and procedures to be kept available
172	Notification of change to policies or procedure

## RELATED POLICIES

Administration of First Aid Policy Emergency and Evacuation Policy Family Communication Policy Health and Safety Policy	Incident, Incident, Trauma and Illness Policy Supervision Policy Work Health and Safety Policy
--	--

## PURPOSE

We aim to ensure every reasonable precaution is taken to protect children and NVFDC educators from harm and hazards likely to cause injury, including the potential risk from snake bites. This policy aims to define the risks of snakes within environments in NVFDC residences and approved venues, the necessary strategies implemented to minimise the risk of snake bites and the appropriate medical response if required.

## SCOPE

This policy applies to the Approved Provider, Nominated Supervisor, Coordinator, students, volunteers, educators and educator assistants of the NVFDC Service.

## SNAKES

Australia has around 170 species of land snakes, some equipped with venom more toxic than any other snakes in the world. Some of the most dangerous snakes belong to the front-fanged group including- the tiger snake, brown snake, eastern taipan, death adder and mulga or king brown snake. Although less venomous than many other Australian snakes, the red-bellied black snake is quite common in urban areas of NSW. Snake bites can be potentially fatal so immediate medical assistance should be sought for all cases of suspected snake bite.

Snakes are not naturally aggressive and always prefer to retreat. They will only attack humans if hurt or provoked. People are most likely to be bitten when attempting to kill or handle a snake.

## IMPLEMENTATION

### THE APPROVED PROVIDER/NOMINATED SUPERVISOR/COORDINATOR WILL:

- Ensure obligations under the *Education and Care Services National Law and National Regulations* are met
- Ensure educators, staff, students, visitors and volunteers have knowledge of and adhere to this policy
- Assist NVFDC educators to conduct a risk assessment to identify the potential risk of encountering a snake on the NVFDC Service premises, NVFDC residence or approved venue
- Assist in developing an emergency plan and procedure to include the response if encountering a snake and emergency first aid required in case of a snake bite
- Provide a snake identification chart for snakes found in our local area for NVFDC educators
- Ensure all NVFDC educators and educator assistants have current emergency first aid training
- Review information each 'snake season' in regard to immobilisation techniques
- Ensure all NVFDC educators have fully stocked First Aid Kits containing compression bandages
- Ensure NVFDC educators conduct daily inspections of the outdoor and indoor learning environment prior to children arriving at the FDC Service
- Ensure lawns and gardens are well maintained at each residence and approved venue
- Request educators cut any long grass around the boundaries of the premises
- Ensure snake habitats such as piles of timber; compost heaps or sheets of galvanized iron are removed from around the premise
- Ensure clean surroundings around any animal housing/cages to reduce any potential mice population (a food source for snakes) are maintained

- Ensure any chicken or other animal enclosures are reptile proof
- Ensure pet food and water bowls are not accessible to wildlife
- Ensure children are educated about how to respond to a snake sighting or encounter at the residence or when participating on an excursion
- Ensure NVFDC educators have the contact number of Wires or other licensed snake handler readily available to assist in rescuing the snake if the snake cannot return to its natural environment- [for example the snake is located in a garden shed or storage container; the snake is located inside and is unable to exit the building/premises]
- Ensure the NVFDC educator completes an *Incident, Injury, Trauma and Illness Record* in the event of a snake bite
- Make a notification of a serious incident to a regulatory authority (within 24 hours) through the [NQA IT System](#) when emergency services have attended an education and care service in response to an emergency
- Ensure all NVFDC educators, educator assistants and other staff wear enclosed footwear at all times.

#### FAMILY DAY CARE EDUCATORS AND EDUCATOR ASSISTANTS WILL:

- Collaborate with the Nominated Supervisor/Coordinator to conduct risk assessments for potential risk of snakes in their environment
- Examine the NVFDC Service grounds during their daily indoor and outdoor safety checks to ensure no snakes are sighted
- Ensure no animal food or water is left out for wildlife overnight
- Ensure lawns and gardens are well maintained at each residence and approved venue
- Ensure snake habitats such as piles of timber; compost heaps or sheets of galvanized iron are removed from around the residence or venue
- Ensure emergency evacuation policies and procedures are in place in case of a snake encounter or snake bite
- Ensure emergency first aid training is current
- Ensure the First Aid Kit is easily accessible and contains compression bandages
- Always leave snakes alone
- Be aware of snake species inhabiting the local area
- Ensure a fully stocked first aid kit, containing compression bandages, is taken on excursions
- Notify the Nominated Supervisor/Coordination Unit if a snake has been sighted within the NVFDC residence environment
- Wear adequate clothing and enclosed shoes at all times

- Educate children about snakes and snake bite prevention behaviours
- Ensure children are reminded on a regular basis that if they encounter a snake, to move away quietly and report the sighting to the NVFDC educator
- Educate children not to put their hands into hollow logs or rock crevices

## ENCOUNTERING A SNAKE

If a snake is sighted or encountered the NVFDC educator and/or educator assistant will:

- Inform children to move away quietly
- Remove all children from the immediate area, or evacuate the room until snake is removed if indoors
- Isolate this area until the snake is removed or moves away
- Note the location of the snake
- If possible, monitor the snake from a safe distance (at least 5 metres away)
- If snake remains and is perceived to be a threat, contact local snake handler or WIRES
  - Mid North Coast Snake Catcher – 0408 421 255
  - Nambucca Valley Snake Relocation – 0455 721 321
  - WIRES – 1300 094 737 or via their [online form](#)
- If indoors, close doors to the room and place towels along the bottom of the doors so the snake cannot move to another area and wait for snake handler to remove the snake
- **Do not** approach the snake or try to contain it

## EMERGENCY SNAKE BITE ACTION PLAN

- Stay calm and call for help - have someone call 000 for an ambulance. All snake bites must be treated as potentially life-threatening
- Reassure the child/adult and encourage them to keep calm and still
- Immediately apply a firm bandage over the bite marks or scratches per First Aid Instructions
- Apply Pressure Immobilisation Technique (see Appendix 1)
- Maintain continued pressure and immobilise ensuring the child/adult does not move
- Rest and reassure the patient
- Conduct a primary survey of the area should time and circumstance allow – do not attempt to catch or kill the snake, you do not need to identify the snake or take a photo – seek help immediately, your priority is the victim of the snake bite
- **Do not** take off clothing
- **Do not** wash bite as a venom sample can be used to identify the snake
- **Do not** cut or suck the bite to drain venom

- Do not apply a tourniquet
- Do not give the person food or drink
- Do not allow the person to walk or move
- Do not wait for symptoms to appear before seeking emergency medical assistance
  - Symptoms can include:
    - Fang marks in the skin or a scratch
    - Swelling or pain at the bite site
    - Headache or blurred vision
    - Muscle weakness or paralysis
    - Difficulty breathing or a drop in blood pressure
- Be prepared – if the person collapses or stops breathing commence CPR

#### FAMILIES WILL:

- Familiarise themselves with the *Snake Awareness Policy*
- Ensure their child wears closed shoes when attending NVFDC Services
- Reinforce snake awareness behaviours with their child- especially during ‘snake season’
- Provide feedback to NVFDC regarding this policy for review and improvement

#### CONTINUOUS IMPROVEMENT/REFLECTION

Our *Snake Awareness Policy* will be reviewed on an annual basis annually or earlier if there are changes to legislation, ACECQA guidance or any incident related to our policy. Feedback will be requested from children, families, staff, educators and management and notification of any change to policies will be made to families within 14 days.

#### CHILDCARE CENTRE DESKTOP- RELATED RESOURCES

Administration of First Aid Procedure Incident, Injury, Trauma and Illness Record	Snake Threat - Risk Assessment Action Plan
--	--

#### SOURCES

Australian Children’s Education & Care Quality Authority. (2025). [Guide to the National Quality Framework](#)  
 Australian Venom Research Unit, University of Melbourne [www.avru.org](http://www.avru.org)  
 Australian Capital Territory Government Environment, Planning and Sustainable Development Directorate-  
 Environment *Urban Wildlife Snakes*  
[Education and Care Services National Regulations](#). (Amended 2023)  
 Health Direct <https://www.healthdirect.gov.au/snake-bites>  
 St John Ambulance Australia (2020) *First aid fact sheet Snake Bite*

## REVIEW

POLICY REVIEWED BY	Tella Markham	Nominated Supervisor	27/11/25
POLICY REVIEWED	NOVEMBER 2025	NEXT REVIEW DATE	NOVEMBER 2026
VERSION NUMBER	V25.1		
MODIFICATIONS	<ul style="list-style-type: none"> <li>• Annual policy maintenance</li> <li>• Directions for snake bite procedure updated – do not try to identify, respond immediately and call 000</li> <li>• Sources checked for currency and updated as required</li> </ul>		
POLICY REVIEW	PREVIOUS MODIFICATIONS	NEXT REVIEW DATE	
AUGUST 2024	<ul style="list-style-type: none"> <li>• policy maintenance - no major changes to policy</li> <li>• hyperlinks checked and repaired as required</li> <li>• Childcare Centre Desktop resources added</li> <li>• sources checked for currency and updated as required</li> </ul>	OCTOBER 2025	
AUGUST 2023	<ul style="list-style-type: none"> <li>• Appendix moved to end of policy</li> <li>• Sources checked</li> <li>• Continuous improvement section added</li> <li>• Annual policy maintenance</li> </ul>	AUGUST 2024	
AUGUST 2022	<ul style="list-style-type: none"> <li>• hyperlinks checked and repaired as required</li> <li>• minor formatting edits within text</li> <li>• policy maintenance - no major changes</li> </ul>	AUGUST 2023	

## APPENDIX 1

### Pressure Immobilisation Bandage Technique

A pressure immobilisation bandage is recommended for anyone bitten by a venomous snake. This involves firmly bandaging the area of the body involved, such as the arm or leg, and keeping the person calm and still until medical help arrives.

Follow these steps to apply a pressure immobilisation bandage:

- First put a pressure bandage over the bite itself. It should be tight, and you should not be able to easily slide a finger between the bandage and the skin.
- Then use a heavy crepe or elasticised roller bandage to immobilise the whole limb. Start just above the fingers or toes of the bitten limb and move upwards on the limb as far as the body. Splint the limb including joints on either side of the bite.
- Keep the person and the limb completely at rest. If possible, mark the site of the bite on the bandage with a pen.

(Source: Australian Government, *health direct*)

### Reference Poster

[First aid fact sheet Snake bite St John Ambulance](#)

Copy of the poster is provided on the following page.



## First aid fact sheet

# Snake bite



All known or suspected snake bites must be treated as potentially life-threatening, and medical aid should be sought urgently.

### Signs and symptoms

Signs of a snake bite are not always visible. In some cases, the patient may not have felt anything. Symptoms may not appear for an hour or more after the person has been bitten.

Depending on the type of snake, signs and symptoms can include some or all of the following:

- immediate or delayed pain at the bite site
- swelling, bruising or local bleeding
- bite marks (usually on a limb) that can vary from obvious puncture wounds to scratches that can be almost invisible
- swollen and tender glands in the groin or armpit of the bitten limb
- faintness, dizziness
- nausea and vomiting
- headache
- abdominal pain
- oozing of blood from the bite site or gums
- double or blurred vision
- drooping eyelids
- difficulty in speaking or swallowing
- limb weakness or paralysis
- difficulty in breathing
- occasionally, initial collapse or confusion followed by partial or complete recovery.

### What to do

#### Pressure bandage & immobilise

- 1 Follow DRSABCD.
- 2 Call Triple Zero (000) for an ambulance.
- 3 Lie the patient down and ask them to keep still. Reassure the patient.
- 4 If on a limb, apply an elasticised roller bandage (10–15 cm wide) over the bite site as soon as possible.
- 5 Apply a further elasticised roller bandage (10–15 cm wide), starting just above the fingers or toes and moving upwards on the bitten limb as far as can be reached.
  - Apply the bandage as firmly as possible to the limb. You should be unable to easily slide a finger between the bandage and the skin.
- 6 Immobilise the bandaged limb using splints.
- 7 Write down the time of the bite and when the bandage was applied. If possible, mark the location of the bite site (if known) on the skin with a pen, or photograph the site. Do not wash venom off the skin or clothes because it can assist identification.
- 8 Stay with the patient until medical aid arrives.



### In a medical emergency call Triple Zero (000)

**DRSABCD** Danger ► Response ► Send for help ► Airway ► Breathing ► CPR ► Defibrillation

You could save a life with first aid training • [www.stjohn.org.au](http://www.stjohn.org.au) • 1300 360 455

This information is not a substitute for first aid training. Formal instruction in resuscitation is essential. St John Ambulance Australia is not liable for any damages or incidents that may occur in the use of this information by other parties or individuals. This is not for commercial distribution. © St John Ambulance Australia 2022.

# Snake Safety on the Mid North Coast

## Staying Safe and Snake-Smart in Family Day Care

The Mid North Coast is home to a number of native snakes. Most are shy and avoid people, but encounters can happen - especially in the warmer months (Sept - April).

### Snakes Prefer to Avoid Humans

Although they may seem intimidating, most Australian snakes are shy, solitary and non-aggressive. They do not seek out humans, and if given space, they will usually move away quietly.

Snakes only bite in self-defence, typically when they feel threatened or cornered. If left alone, the risk of being bitten is very low.

## COMMON LOCAL SNAKES



Eastern Brown Snake



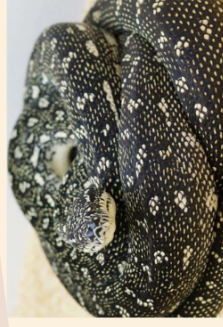
Death Adder



Coastal Carpet Python



Red Belly Black Snake



Diamond Python

### If You See a Snake

1. **Remain calm** and **do not approach** it
2. Move everyone away calmly
3. Bring **children and pets inside**
4. Give the snake time to move on
5. **Never** try to **touch, catch or harm** the snake

- Call a licensed snake catcher

- If a bite occurs:
  - **Call 000** immediately
  - **Keep the person still**
  - Apply a **pressure immobilisation bandage**, starting from the bite site
  - **Do not wash** the bite area



### Safety Tips

- **Keep play areas tidy** - remove long grass, leaf litter, piles of wood or debris
- **Close doors and gates** to stop snakes wandering inside
- **Supervise play** and watch out for snakes especially during warmer months and after rain

Mid Coast Snake Catcher

**Adam Strickland**

**0459 632 710**

**WIRES 1300 094 737**